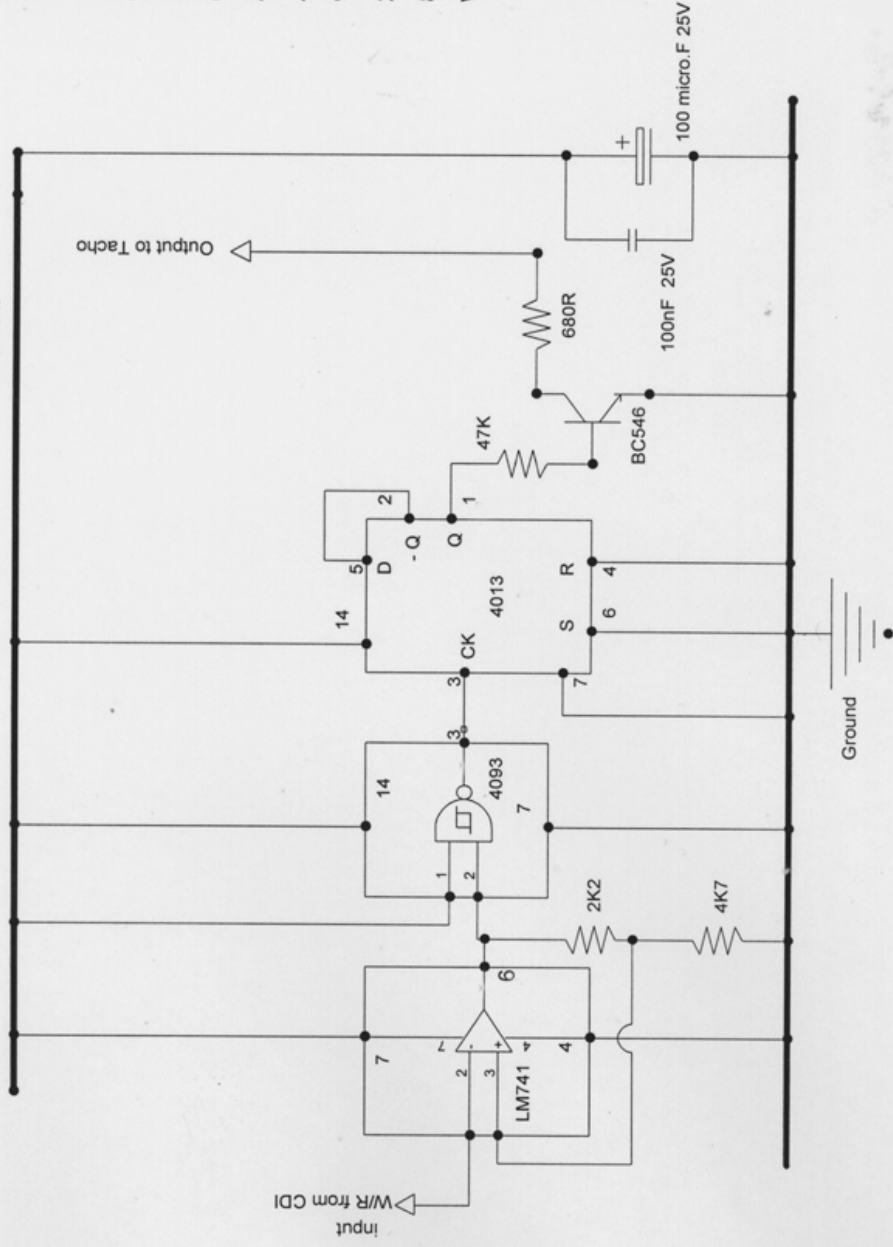


+12 Volt bus



Shopping list :-

- Resistors all 1/8W 47K, 4K7, 2K2, 680R
- Capacitors all over 16V 100nF, 100microF electrolytic
- NPN Transistor BC546
- OP-Amp LM741
- 4093 Schmitt trigger NAND Gate
- 4013 D-Type Bi-stable
- "VERO" Type board
- 2 * 16 Pin chip sockets,
- 8 pin chip socket

Wire suitable for making links on "VERO" Board

PLEASE NOTE:- On the 4093 the following pins:- 5 & 6, 8 & 9, 12 & 13, should be connected to the ground rail, this is to reduce " noise" in the system

Title	Divide by two circuit for Tacho		
Author	Geo		
File	D:\SALTIMINE\PICS\divide-by-two-v4d.dsn		
Revision	4.6	Date	2008-04-25
	6		7

K.G.B. Racing of T. & T.

Document
Sheets
1 of 1